



# Tailor-Made Diagnostic Solutions

# High-quality and flexible use

Satrotec had many years of experience with components and solutions for the vehicle diagnostics market, from diagnostic cables, OBD-II connectors, right through to Ethernet connectors. Using our modern technology, we develop and produce parts that are perfectly suited to your needs. At the same time, we also take into account the latest market trends, for example “wireless”.

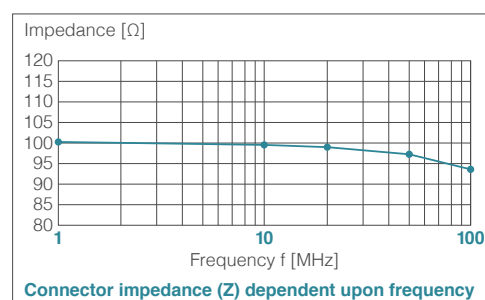


## OBD-II connector designs

The gold-plated contacts are cast directly in plastic (PA6 GF25) and designed so that they cannot be pushed out of their holder. The connector may contain electronic components such as fuses or complete circuit boards. It is cast with the latest TPE plastic to protect it against impacts, vibrations, dirt and water. A very effective and proven cable strain relief is also integrated. The casing shape and materials can be customized to your needs.

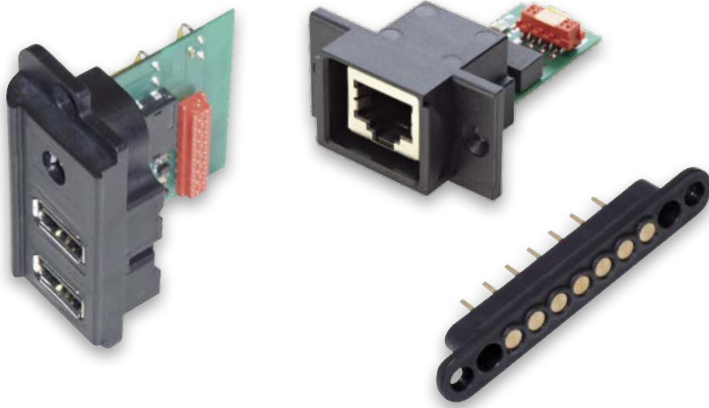
## Specifications at a glance

- All connectors comply with ISO 15031-3:2004
- Connector housing of PA6 GF25 UL94 V-0
- Fully loaded with 16 gold-plated pin contacts, fixed 100% in position
- Designed for 30,000 plug-in/unplug cycles
- Pins on soldering side straight or bent to 90° to connect a circuit board
- Various locking mechanisms for low or high with drawal forces
- All designs available as type A (car version) and type B (truck version)



- Suitable for fast data transmission up to 100 Mbps

- Constant impedance up to 100 MHz (Return Loss > 13 dB over the entire frequency range, even after > 30 000 mating cycles)



### Various device interfaces

The device interfaces (USB, Ethernet etc.) are either manufactured completely by us or cast directly at the VCI – for the best possible protection during use in workshops, water-proof and shockproof.

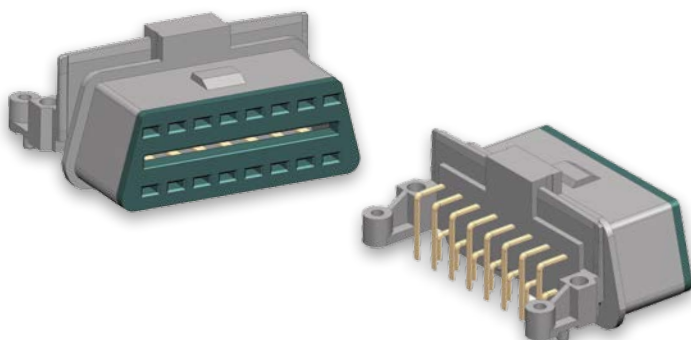
### Various OBD-II cable solutions

We manufacture cable sets for you with various connectors (OBD, round connector, DSub connector etc.).

### Specifications at a glance

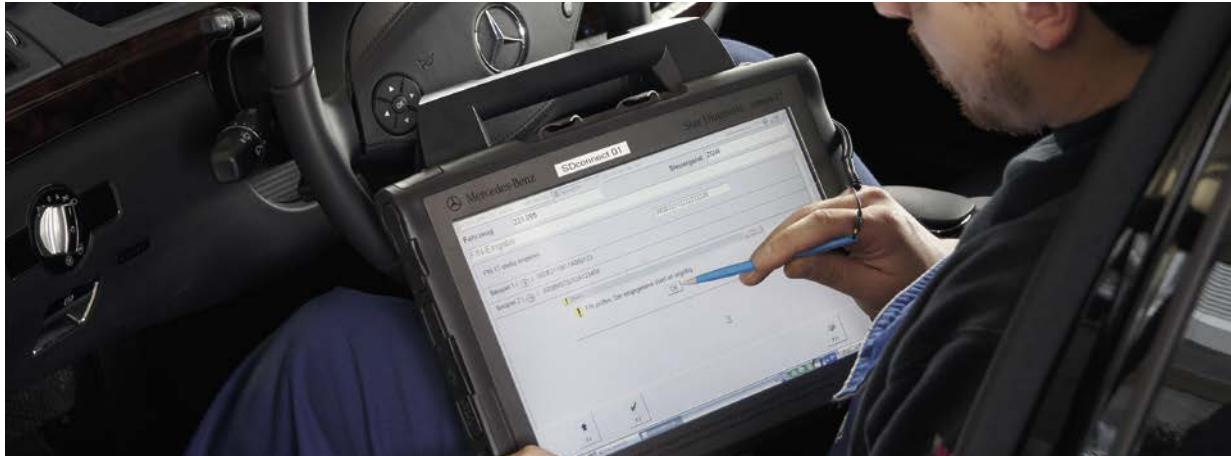
- Cable configuration and OBD type designed for your specific application
- Individual interface on device side
- Cast on both sides with TPE UL94 V-0, satisfies IP67
- Circuit boards or other components can be positioned within the cable casting (max. 42 x 25 mm)
- Integrated strain relief

**NEW** OBD-II extension cable male/female with 16-pin lead suitable for ground cable use



### OBD-II socket connector

The technical properties correspond largely to those of the OBD-II connector. A version for a 90° circuit board mounting is also available. The socket connector is designed for 2,000 plug-in/unplug cycles. A version for 30,000 plug-in/unplug cycles is optionally available.



Diagnostic solutions from Satrotec offer high reliability in daily use and are already valued by numerous users on account of their flexible applications.

Interested? If so, contact us for more information or if you have any questions. We are looking forward to hearing from you!

**Certification**

ISO 2009 TS 16949

**Main office:**

Satrotec AG  
Wasterkingenweg 2  
CH-8193 Eglisau  
Tel. +41 44 855 23 00  
Fax +41 44 855 23 23  
info@satrotec.ch

**Romania:**

Satrotec SRL  
Str. Biruintei Nr. 29 (Oarda)  
519007 Alba Iulia  
Romania  
Tel. +40 358 401 620  
Fax +40 358 401 622  
info@satrotec.ro



**www.satrotec.ch**